



8708

WOMEN'S SPORTY MESH PANEL JACKET



Women's round neck knit rib collar jacket. Mesh side panels. Dyed-to-match nylon zipper front. Half rib trim cuff. Two curved front pockets. Two small mesh pockets at side panels. One large hidden pocket.

Reg: **XXS - XL** (M): 27"

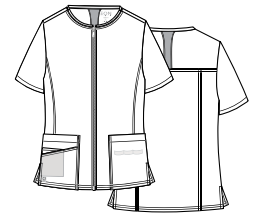
Plus: **2XL - 3XL** (M): 27"

- CBL
- TNY
- WIN
- PEW
- BLK
- WHT



8728

WOMEN'S BACK MESH PANEL SHORT SLEEVE ZIP JACKET



Women's short sleeve round neck zipper jacket. Dyed-to-match zipper front. Three patch pockets with one hidden pocket and inner utility loop. Curved back yoke with mesh panel and piping inside. Front and back seams. Side vents.

Reg: **XXS - XL** (M): 28.25"

Plus: **2XL - 3XL** (M): 28.25"

- CBL
- TNY
- BLK
- WHT

