



CAREER

GLOWEAVE







PROUDLY AUSTRALIAN OWNED AND OPERATED SINCE 1944

## SOFT DRESSING

### Luxe Twill

#### MASON (NEW)

Short Sleeve Dress 04

#### REESE (NEW)

V Neck Top 06

#### FREYA

Shirred Cuff Soft Top 08

#### LOLA

3/4 Sleeve Shirred Cuff Top 10

#### TAYLOR

Short Sleeve Soft Top 12

### QUINN

Long Sleeve Soft Top 14

### Silk Touch Tops

#### PIPER

3/4 Sleeve Keyhole Top 16

#### WILLOW

Short Sleeve Button Cuff Top 18

#### BAILEY

Long Sleeve Button Through Blouse 20

## TAILORED SEPARATES

### Double Cloth

#### COCO (NEW)

7/8th Slim Pants 22

#### GEORGIA (NEW)

Full-Length Slim Pants 24

## SUITING

### Machine Washable Separates

#### ELLIOT

Washable Short Sleeve Dress (NEW) 26

Washable Pencil Skirt 28

Washable Longline Pencil Skirt (NEW) 30

Washable Box Pleat Skirt 32

Washable Slim Leg Pant 34

Washable 7/8th Pant (NEW) 36

Washable Utility Pant 38

Washable Crop Jacket 40

Washable One Button Jacket 42

Washable Jacket 44

Washable Pant 46

## BUSINESS CASUAL

### Premium Chinos

#### NAPIER

Premium Chino Pants 48

### Textured Jackets

#### CLAREMONT

Washable Textured Jacket 50

Washable Textured Crop Jacket 52

### Shirtdress

#### RILEY

Sateen Belted Shirtdress 54



# SHIRTS

## Easy Care Shirts

### WESTGARTH

Gingham Long Sleeve Shirts	56
Gingham Short Sleeve Shirts	58
Gingham Slim Fit Shirts	60

### NICHOLSON

Premium Poplin Long Sleeve Shirts	62
Premium Poplin Short Sleeve Shirts	64

### FAWKNER

Micro Check Shirts	66
--------------------	----

### BRADFORD

Fine Oxford Shirts	68
--------------------	----

### SOHO

Dot Print Shirts	70
------------------	----

### ULTIMATE

Ultimate White Long Sleeve Shirts	72
Ultimate White Short Sleeve Shirts	74

### LANDSDOWNE

Micro Step Shirts	76
-------------------	----

### BELL

Textured Mini Check Shirts	78
----------------------------	----

### GUILDFORD

Square Textured Shirts	80
------------------------	----

### WINDSOR

Puppy Tooth Long Sleeve Shirts	82
Puppy Tooth Short Sleeve Shirts	84

### FOXTON

Tonal Check Shirts	86
--------------------	----

### BOURKE

Oxford Check Men's Shirt	88
--------------------------	----

### OXFORD

Oxford Shirts	90
---------------	----

### DEGRAVES

Oxford Check Shirts	92
---------------------	----

### SMITH

End On End Long Sleeve Shirts	94
End On End Short Sleeve Shirts	96

### ICON

5045 Chambray Shirts	98
----------------------	----

### WELLINGTON

Denim Dobby Shirts	100
--------------------	-----

### HARDWARE

Chambray Dobby Shirts	102
-----------------------	-----

## SIZE GUIDE

104

# MASON

## 1801WD

### SHORT SLEEVE DRESS

- Luxe Twill Fabric
- Tie Waist
- Side Pockets
- Centre Zip Back

**SIZES** 6 - 24

**FABRIC** 97% Polyester, 3% Elastane



**MACHINE WASHABLE**



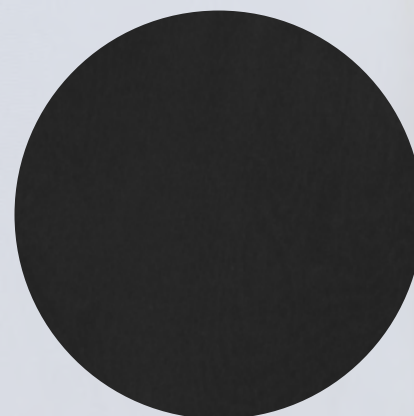
**EASY CARE**



NAVY



DENIM



BLACK



NEW  
STYLE



DENIM

MASON

NEW  
STYLE



CHARCOAL



# REESE

## 1800WZ

### V NECK TOP

- Luxe Twill Fabric
- Elbow Length Sleeve With Tab
- Can Be Worn With Sleeve Up Or Sleeve Down

**SIZES** 6 - 30

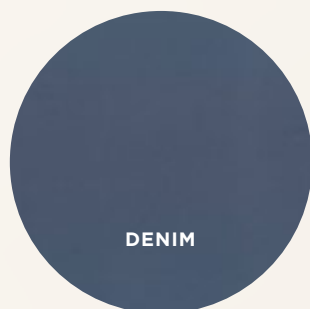
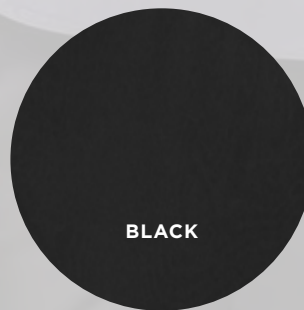
**FABRIC** 97% Polyester, 3% Elastane



**MACHINE WASHABLE**



**EASY CARE**



# FREYA

1796WL

## SHIRRED CUFF SOFT TOP

- Luxe Twill Fabric
- Shirred Cuff
- Keyhole Back Closure

**SIZES** 6 - 30

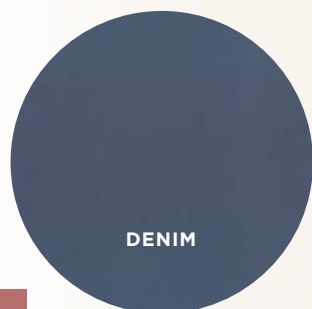
**FABRIC** 97% Polyester, 3% Elastane



MACHINE WASHABLE



EASY CARE





NEW  
COLOURS

FREYA

BLACK



NEW  
COLOURS



NAVY

# LOLA

## 1799WZ

### 3/4 SLEEVE SHIRRED CUFF TOP

- Luxe Twill Fabric
- Shirred Cuff
- Elbow Length Sleeve
- Keyhole Back Closure

**SIZES** 6 - 30

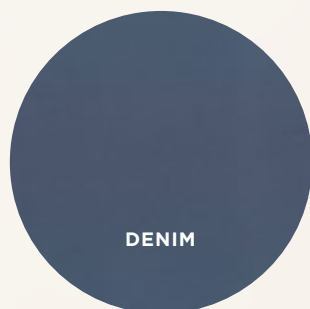
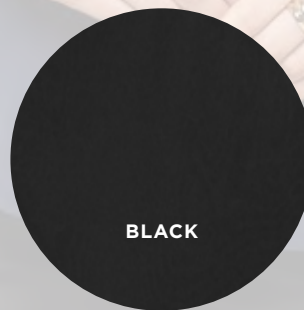
**FABRIC** 97% Polyester, 3% Elastane



MACHINE WASHABLE



EASY CARE





# TAYLOR

1798WS

## SHORT SLEEVE SOFT TOP

- Luxe Twill Fabric
- Short Sleeve Shell Top
- Exposed Zip At Centre Back

**SIZES** 6 - 30

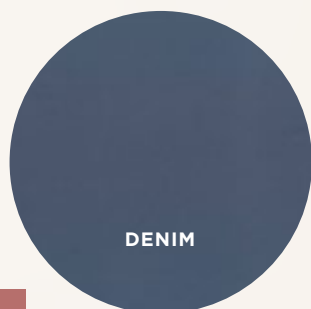
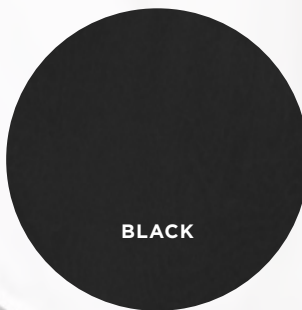
**FABRIC** 97% Polyester, 3% Elastane



MACHINE WASHABLE



EASY CARE



NEW  
COLOURS

TAYLOR

IVORY



NEW  
COLOURS



SILVER



# QUINN

## 1797WL

### LONG SLEEVE SOFT TOP

- Luxe Twill Fabric
- Mitred Cuff
- Concealed 1/2 Placket
- Inverted Centre Back Pleat

**SIZES** 6 - 30

**FABRIC** 97% Polyester, 3% Elastane



MACHINE WASHABLE



EASY CARE



NAVY



IVORY



BLACK



DENIM



SILVER



CHARCOAL

# PIPER

1752WZ

## 3/4 SLEEVE KEYHOLE TOP

- Soft Touch Silk Handfeel
- Relaxed Fit
- Ruffle Collar
- Keyhole Neck With Self Tie

**SIZES** 6 - 30

**FABRIC** 100% POLYESTER



**MACHINE WASHABLE**



**EASY CARE**



**BLACK**



**BLUSH**



**MIST**

BLACK



PIPER





MIST

# WILLOW

## 1751WS

### SHORT SLEEVE BUTTON CUFF TOP

- Soft Touch Silk Handfeel
- Mock Button Cuff With Shirring Detail
- Keyhole Back Neck

**SIZES** 6 - 30

**FABRIC** 100% Polyester



MACHINE WASHABLE



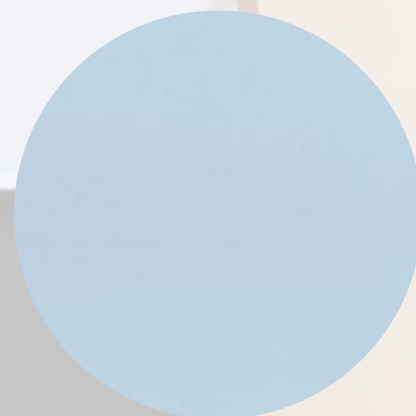
EASY CARE



BLACK



BLUSH



MIST

# BAILEY

1753WL

## LONG SLEEVE BUTTON THROUGH BLOUSE

- Soft Touch Silk Handfeel
- Ruffle Collar
- Back Yoke With Inverted Pleat
- Button Cuff

**SIZES** 6 - 30

**FABRIC** 100% Polyester



MACHINE WASHABLE



EASY CARE



BLACK



BLUSH



MIST





NEW  
STYLE



BLACK

# COCO

## 1734WT

### 7/8TH SLIM PANTS

- Premium Quality Double Cloth
- 7/8 Length
- Split Detail At Side Hem
- Front Angled Pockets
- Mock Back Welt Pockets
- Belt Loops

**SIZES** 6 - 26

**FABRIC** 60% Cotton, 35% Nylon, 5% Spandex

 **COTTON RICH**  **MACHINE WASHABLE**  **EASY CARE**



BLACK



NAVY



# GEORGIA

## 1735WT

### FULL-LENGTH SLIM PANTS

- Premium Quality Double Cloth
- Full Length
- Front Angled Pockets
- Mock Back Welt Pockets
- Belt Loops

**SIZES** 6 - 26

**FABRIC** 60% Cotton, 35% Nylon, 5% Spandex

 COTTON RICH  MACHINE WASHABLE  EASY CARE



BLACK



NAVY

NEW  
STYLE



BLACK

NEW  
STYLE



  
WASH ME

  
HANG ME

  
WEAR ME

BLACK



# ELLIOT

## 1761WD

### WASHABLE SHORT SLEEVE DRESS

- V Neck
- Elbow Length Sleeve
- Front Split
- Centre Back Zip
- Fully Lined

**SIZES** 6 - 18

**FABRIC** 77% Polyester, 21% Viscose, 2% Spandex, 100% Polyester  
Mechanical Stretch Lining

 **MACHINE WASHABLE**  **EASY CARE**



BLACK



CHARCOAL



NAVY

# ELLIOT

## 1724WSK

### WASHABLE PENCIL SKIRT

- Curved Waistband With Belt Loops
- Front Pockets
- Invisible Zip At Centre Back
- Inverted Pleat At Back Hem

**SIZES** 4 - 24

#### **FABRIC**

77% Polyester, 21% Viscose, 2% Spandex Shell, 100% Polyester Mechanical Stretch Lining

 **MACHINE WASHABLE**  **EASY CARE**



**BLACK**



**CHARCOAL**



**NAVY**



BLACK



WASH ME



HANG ME



WEAR ME

NEW  
STYLE



WASH ME



HANG ME



WEAR ME

NAVY



# ELLIOT

## 1731WSK

### WASHABLE LONGLINE PENCIL SKIRT

- Centre Back Split At Hem
- Curved Waistband
- Side Zip
- Fully Lined

**SIZES** 6 - 24

**FABRIC** 77% Polyester, 21% Viscose, 2% Spandex, 100% Polyester  
Mechanical Stretch Lining



**MACHINE WASHABLE**



**EASY CARE**



BLACK



CHARCOAL



NAVY

# ELLIOT

## 1766WSK

### WASHABLE BOX PLEAT SKIRT

- Belt Loops At Waist
- Front Pockets
- Invisible Zip At Centre Back
- Box Pleats At Front And Back Hem

**SIZES** 6 - 24

#### **FABRIC**

77% Polyester, 21% Viscose, 2% Spandex Shell, 100% Polyester Mechanical Stretch Lining



**MACHINE WASHABLE**



**EASY CARE**



**BLACK**

BLACK



WASH ME



HANG ME



WEAR ME



WASH ME



HANG ME



WEAR ME

NAVY



# ELLIOT

## 1762WT

### WASHABLE SLIM LEG PANT

- Concealed Comfort Waist
- Flat Front
- Angled Side Pockets
- Jet Back Pockets

**SIZES** 4 - 30

**FABRIC** 77% Polyester, 21% Viscose, 2% Spandex

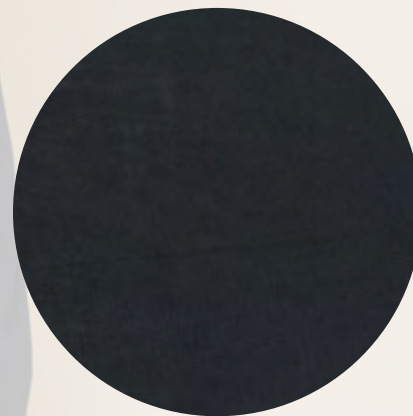
 **MACHINE WASHABLE**  **EASY CARE**



BLACK



CHARCOAL



NAVY

# ELLIOT

## 1732WT

### WASHABLE 7/8TH PANT

- 7/8th Length
- Split Detail At Side Hem
- Front Angled Pockets
- Mock Back Welt Pockets
- Fly Front With Hook And Bar Closure

**SIZES** 6 - 24

#### **FABRIC**

77% Polyester, 21% Viscose, 2% Spandex Shell, 100% Polyester Mechanical Stretch Lining



**MACHINE WASHABLE**



**EASY CARE**



**BLACK**



**CHARCOAL**



**NAVY**

NEW  
STYLE

ELLIOT



BLACK



WASH ME



HANG ME



WEAR ME



WASH ME



HANG ME



WEAR ME

CHARCOAL



# ELLIOT

## 1729WT

### WASHABLE UTILITY PANT

- Concealed Comfort Waist
- Angled Side Pockets
- Jet Back Pockets
- Coin Fob Pocket
- Key Chain Belt Loop

**SIZES** 6 - 24

**FABRIC** 77% Polyester, 21% Viscose, 2% Spandex



**MACHINE WASHABLE**



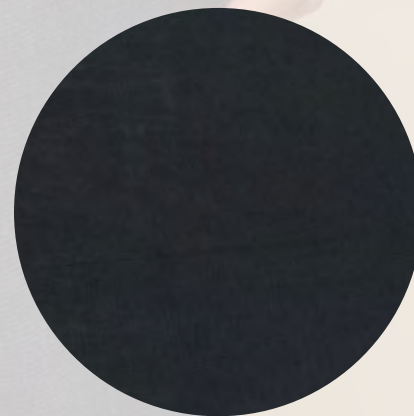
**EASY CARE**



BLACK



CHARCOAL



NAVY

# ELLIOT

## 1721WJ

### WASHABLE CROP JACKET

- Women's Crop Jacket
- Single Button
- Shawl Collar
- Side Jet Pockets
- Angle Front & Cropped Back Hem

**SIZES** 4 - 26

#### **FABRIC**

77% Polyester, 21% Viscose, 2% Spandex Shell, 100% Polyester Lining

 **MACHINE WASHABLE**  **EASY CARE**



BLACK



CHARCOAL



NAVY

BLACK



WASH ME



HANG ME



WEAR ME





WASH ME



HANG ME



WEAR ME

NAVY



# ELLIOT

## 1765WJ

### WASHABLE ONE BUTTON JACKET

- Women's Tailored Jacket
- Single Button
- Single Notch Lapel
- Side Jet Pockets

**SIZES** 4 - 24

#### FABRIC

77% Polyester, 21% Viscose, 2% Spandex Shell, 100% Polyester Lining



**MACHINE WASHABLE**



**EASY CARE**



BLACK



CHARCOAL



NAVY

# ELLIOT

## 1728MJ

### WASHABLE JACKET

- Men's Two Button Jacket
- Notch Lapel
- Flap Pockets
- Double Vent Back

**SIZES** 87 - 137

#### FABRIC

77% Polyester, 21% Viscose, 2% Spandex Shell, 100% Polyester Lining



**MACHINE WASHABLE**



**EASY CARE**



**BLACK**



**CHARCOAL**



**NAVY**

BLACK



WASH ME



HANG ME



WEAR ME



WASH ME



HANG ME



WEAR ME

CHARCOAL



# ELLIOT

## 1722MT

### WASHABLE PANT

- Men's Flat Front Trouser
- Concealed Comfort Waist
- Angled Side Pockets
- Jet Back Pockets
- Coin Fob Pocket
- Key Chain Belt Loop

**SIZES** 72 - 137

**FABRIC** 77% Polyester, 21% Viscose, 2% Spandex



**MACHINE WASHABLE**



**EASY CARE**



BLACK



CHARCOAL



NAVY

# NAPIER

## PREMIUM CHINO PANTS

### 1754WT

#### WOMEN'S MODERN CHINO

Improved Fit  
High Rise Waist  
Tapered Leg  
Turn Back Cuff  
Angled Front Pockets  
Back Welt Pockets

SIZES 4 - 24

### 1764MT

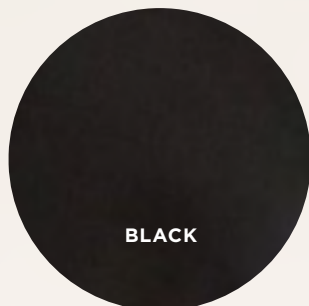
#### MEN'S CHINO PANT

Relaxed Fit  
Side Pockets  
Double Back Pockets  
Key Chain Belt Loop  
Chambray Contrast Turn Up Hem

SIZES 28 - 44

**FABRIC** 97% Cotton, 3% Spandex with Garment Wash

♥ EASY CARE    % COTTON RICH





SAGE



WALNUT



NAPIER





WASH ME



HANG ME



WEAR ME

STEEL



# CLAREMONT

## 1887MJ

### WASHABLE TEXTURED JACKET

- Men's Two Button Blazer
- Functional Flap Pockets
- Single Back Vent
- Highlight Colour Internal Binding

**SIZES** 92 - 132

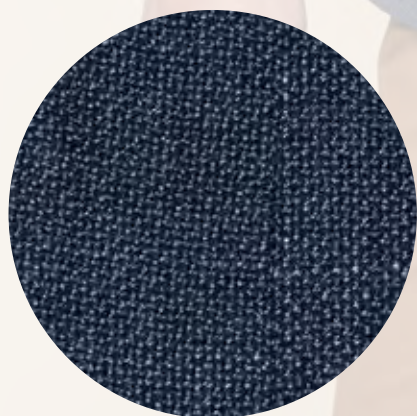
**FABRIC** 71% Polyester 29% Viscose Outer, 100% Polyester Lining



MACHINE WASHABLE



EASY CARE



STEEL

# CLAREMONT

## 1888WJ

### WASHABLE TEXTURED CROP JACKET

- Women's Crop Jacket
- Single Button
- Shawl Collar
- Side Jet Pockets
- Highlight Colour Internal Binding

**SIZES** 6 - 26

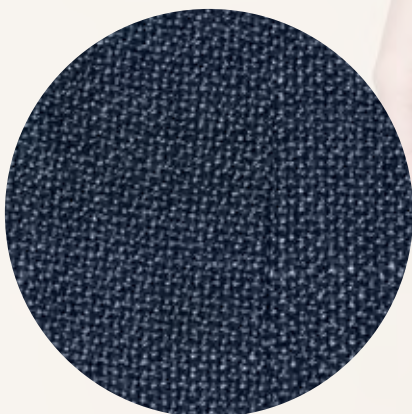
**FABRIC** 71% Polyester 29% Viscose Outer, 100% Polyester Lining



**MACHINE WASHABLE**



**EASY CARE**



**STEEL**



STEEL



  
WASH ME

  
HANG ME

  
WEAR ME



MARINE



# RILEY

## 1894WD

### SATEEN BELTED SHIRTDRESS

- Fit & Flare
- Princess Seams
- Belted Waist
- Roll Up Sleeves With Tab
- Concealed Button Front

**SIZES** 4 - 18

**FABRIC** 97% Cotton, 3% Elastane

 **MACHINE WASHABLE**  **COTTON RICH**



MARINE

# WESTGARTH

## GINGHAM SHIRTS

### 1637L

MEN'S  
LONG SLEEVE

Contemporary Fit  
Classic Collar  
Left Chest Pocket

SIZES 37 - 60

### 1637WL

WOMEN'S  
LONG SLEEVE

Contemporary Fit  
Front Darts  
Action Back Pleats  
Hidden Modesty Button

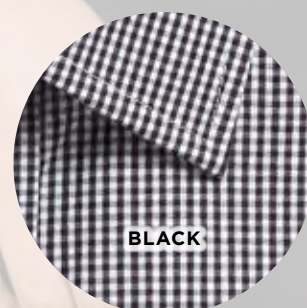
SIZES 6 - 30

**FABRIC** 60% Cotton, 40% Polyester

 COTTON RICH

 EASY IRON FINISH

 SILK PROTEIN FINISH





BEST  
SELLER



NAVY



SKY



BLACK

GREY

CRIMSON



# WESTGARTH

## GINGHAM SHIRTS

### 1637WZ

WOMEN'S  
3/4 SLEEVE

Contemporary Fit  
Action Back Pleats  
Hidden Modesty  
Button

SIZES 6 - 30

### 1637S

MEN'S  
SHORT SLEEVE

Contemporary Fit  
Classic Collar  
Left Chest Pocket

SIZES 37 - 54

### 1637WS

WOMEN'S  
SHORT SLEEVE

Contemporary Fit  
Action Back Pleats  
Hidden Modesty  
Button

SIZES 6 - 30

**FABRIC** 60% Cotton, 40% Polyester

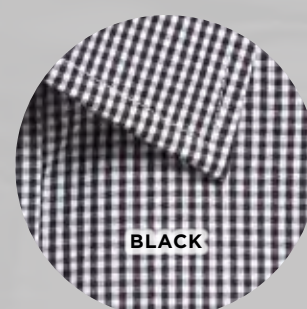
 COTTON RICH



EASY IRON FINISH



SILK PROTEIN FINISH





# WESTGARTH

## GINGHAM SLIM FIT SHIRTS

### 1637WHL

WOMEN'S  
LONG SLEEVE

Slim Fit  
Left Chest Pocket  
Front & Back Darts  
Roll Up Sleeve Tabs  
Adjustable Cuff

SIZES 6 - 20

### 1637HL

MEN'S  
LONG SLEEVE

Slim Fit  
Concealed Button Down Collar  
Left Chest Pocket  
Roll Up Sleeve Tabs  
Adjustable Cuff

SIZES S - 3XL

**FABRIC** 60% Cotton, 40% Polyester

 COTTON RICH



EASY IRON FINISH



SILK PROTEIN FINISH



BLACK



NAVY





NAVY



WESTGARTH

BEST  
SELLER



NAVY

STAR WHITE

NAVY



# NICHOLSON

## PREMIUM POPLIN SHIRTS

### 1520L

MEN'S  
LONG SLEEVE

Slim Fit  
Classic Collar  
Convertible Cuff  
No Pocket

SIZES 37 - 50

### 1520WL

WOMEN'S  
LONG SLEEVE

Slim Fit  
Front & Back Darts  
Hidden Modesty  
Button

SIZES 6 - 26

### 1272L

MEN'S  
LONG SLEEVE

Contemporary Fit  
Classic Collar  
Convertible Cuff  
Left Chest Pocket

SIZES 37 - 60

**FABRIC** 65% Polyester, 35% Cotton

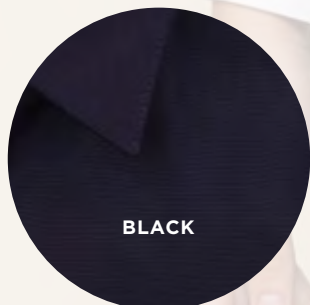
 POLYESTER COTTON



EASY IRON FINISH



SILK PROTEIN FINISH



BLACK



STAR WHITE



FRENCH BLUE



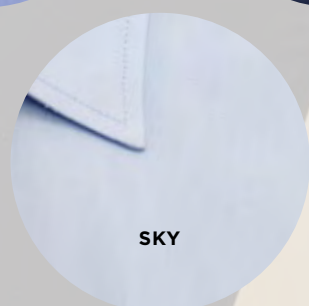
NAVY



CHARCOAL



SILVER



SKY

# NICHOLSON

## PREMIUM POPLIN SHIRTS

### 1520WS

WOMEN'S  
SHORT SLEEVE

Slim Fit  
Front & Back Darts  
Hidden Modesty  
Button

SIZES 6 - 26

### 1272S

MEN'S  
SHORT SLEEVE

Contemporary Fit  
Classic Collar  
Left Chest Pocket

SIZES 37 - 54

### 1520WZ

WOMEN'S  
3/4 SLEEVE

Slim Fit  
Front & Back Darts  
Hidden Modesty  
Button

SIZES 6 - 26

**FABRIC** 65% Polyester, 35% Cotton

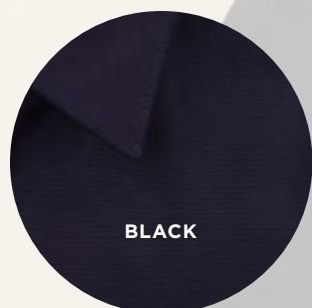
 POLYESTER COTTON



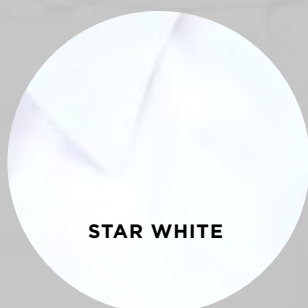
EASY IRON FINISH



SILK PROTEIN FINISH



BLACK



STAR WHITE



FRENCH BLUE



NAVY



CHARCOAL



SILVER



SKY



SKY

CHARCOAL

SKY







# FAWKNER

## MICRO CHECK SHIRTS

### 1895L

MEN'S  
LONG SLEEVE

Contemporary Fit  
Placket Front  
Classic Collar  
Left Chest Pocket

SIZES 37 - 54

### 1895WL

WOMEN'S  
LONG SLEEVE

Women's Slim Fit  
Placket Front  
Front & Back Darts  
Hidden Modesty Button

SIZES 6 - 30

**FABRIC** 60% Cotton, 40% Polyester

 COTTON RICH



EASY IRON FINISH



SILK PROTEIN FINISH



NAVY



SKY



BLACK

# BRADFORD

## FINE OXFORD SHIRTS

### 1899L

MEN'S  
LONG SLEEVE

Slim Fit

Internal Collar & Cuff

Contrast Trims

Button Down Collar

No Chest Pocket

SIZES 37 - 50

### 1899WL

WOMEN'S  
LONG SLEEVE

Slim Fit

Internal Collar & Cuff

Contrast Trims

Front & Back Darts

SIZES 6 - 26

### 1898L

MEN'S  
LONG SLEEVE

Contemporary Fit

Internal Collar & Cuff

Contrast Trims

Button Down Collar

Left Chest Pocket

SIZES 37 - 54

**FABRIC** 60% Cotton, 40% Polyester

 COTTON RICH



EASY IRON FINISH



SILK PROTEIN FINISH



BLUE



WHITE



NAVY





NAVY

WHITE

BLUE





NAVY



WHITE

# SOHO

## DOT PRINT SHIRTS

### 1743L

MEN'S  
LONG SLEEVE

Slim Fit  
Classic Collar  
Convertible Cuff  
No Chest Pocket

SIZES 37 - 54

### 1743WZ

WOMEN'S  
3/4 SLEEVE

Women's Slim Fit  
Front & Back Darts  
Hidden Modesty Button

SIZES 6 - 30

**FABRIC** 60% Cotton, 40% Polyester

 COTTON RICH



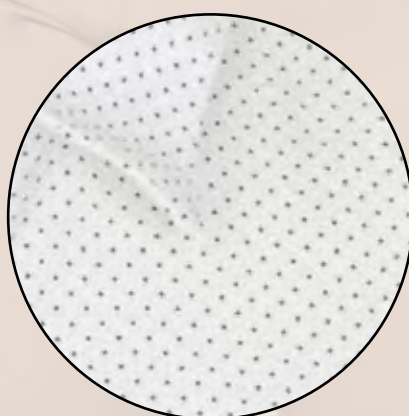
EASY IRON FINISH



SILK PROTEIN FINISH



NAVY



WHITE



# ULTIMATE

## ULTIMATE WHITE SHIRTS

### 1908L

MEN'S  
LONG SLEEVE

Slim Fit  
Classic Collar  
Left Chest Pocket  
Textured Weave  
SIZES S - 6XL

### 1908WL

WOMEN'S  
LONG SLEEVE

Slim Fit  
Front & Back Darts  
Textured Weave  
SIZES 6 - 26

### 1708L

MEN'S  
LONG SLEEVE

Contemporary Fit  
Spread Collar  
No Chest Pocket  
Textured Weave  
SIZES 37 - 56

**FABRIC** 60% Cotton, 40% Polyester

 COTTON RICH



EASY IRON FINISH



SILK PROTEIN FINISH



WHITE





WHITE



WHITE



# ULTIMATE

## ULTIMATE WHITE SHIRTS

### 1908WS

WOMEN'S  
SHORT SLEEVE

Slim Fit  
Front & Back Darts  
Textured Weave

SIZES 6 - 26

### 1908WZ

WOMEN'S  
3/4 SLEEVE

Slim Fit  
Front & Back Darts  
Textured Weave

SIZES 6 - 26

### 1908S

MEN'S  
SHORT SLEEVE

Slim Fit  
Classic Collar  
Left Chest Pocket  
Textured Weave

SIZES S - 6XL

**FABRIC** 60% Cotton, 40% Polyester

 COTTON RICH



EASY IRON FINISH



SILK PROTEIN FINISH



WHITE



# LANDSDOWNE

## MICRO STEP SHIRTS

### 1709WL

WOMEN'S  
3/4 SLEEVE

Contemporary Fit  
Placket Front with White  
Contrast Detail  
Action Back Pleats  
Split Cuff Detail

SIZES 6 - 26

### 1709L

MEN'S  
LONG SLEEVE

Contemporary Fit  
Placket Front  
Spread Collar  
Convertible Cuff

SIZES 37 - 50

**FABRIC** 60% Cotton, 40% Polyester

 COTTON RICH  EASY IRON FINISH



SKY



GREY



SKY





WHITE

BLUE



# BELL

## TEXTURED MINI CHECK SHIRTS

### 1295WL

WOMEN'S  
LONG SLEEVE

Contemporary Fit  
Front & Back Darts  
Classic Collar

SIZES 8 - 24

### 1295L

MEN'S  
LONG SLEEVE

Contemporary Fit  
Classic Collar  
Convertible Cuff  
Left Chest Pocket

SIZES 37 - 54

**FABRIC** 65% Polyester, 35% Cotton

**% POLYESTER COTTON**  **EASY IRON FINISH**



BLUE



WHITE

# GUILDFORD

## SQUARE TEXTURED SHIRTS

### 1251WL

WOMEN'S  
3/4 SLEEVE

Contemporary Fit  
Classic Collar  
Split Cuff Detail

SIZES 6 - 26

### 1251L

MEN'S  
LONG SLEEVE

Contemporary Fit  
Placket Front  
Spread Collar  
Left Chest Pocket

SIZES 37 - 54

**FABRIC** 55% Cotton, 45% Polyester

**% COTTON RICH**  **EASY IRON FINISH**



WHITE



SILVER



BLUE





SILVER





SKY

# WINDSOR

## PUPPY TOOTH SHIRTS

### 1267L

MEN'S  
LONG SLEEVE

Contemporary Fit  
Classic Collar  
Convertible Cuff  
Left Chest Pocket

SIZES 37 - 56

### 1267WL

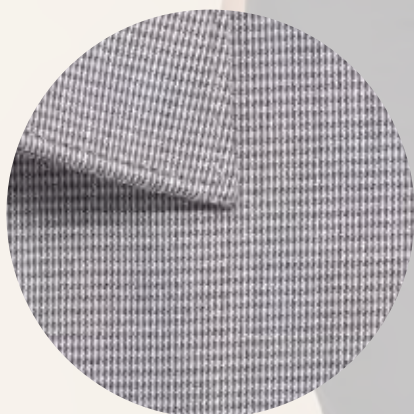
WOMEN'S  
LONG SLEEVE

Slim Fit  
Front & Back Darts  
Classic Collar  
Mitred Cuff

SIZES 6 - 26

**FABRIC** 65% Polyester, 35% Cotton

 POLYESTER COTTON  EASY IRON FINISH



BLACK



SKY



# WINDSOR

## PUPPY TOOTH SHIRTS

### 1267S

MEN'S  
SHORT SLEEVE

Contemporary Fit  
Placket Front  
Classic Collar  
Left Chest Pocket

SIZES 37 - 50

### 1267WS

WOMEN'S  
SHORT SLEEVE

Slim Fit  
Placket Front  
Front & Back Darts  
Classic Collar

SIZES 6 - 26

**FABRIC** 65% Polyester, 35% Cotton

 POLYESTER COTTON  EASY IRON FINISH



BLACK



SKY





BLACK



BLUE



# FOXTON

## TONAL CHECK SHIRTS

### 1711WL

WOMEN'S  
3/4 SLEEVE

Contemporary Fit  
Action Back Pleats  
Hidden Modesty Button  
Bias Cut Cuff Detail

SIZES 6 - 26

### 1711L

MEN'S  
LONG SLEEVE

Contemporary Fit  
Spread Collar  
Adjustable Cuff

SIZES 37 - 50

**FABRIC** 60% Cotton, 40% Polyester

 COTTON RICH

 EASY IRON FINISH

 SILK PROTEIN FINISH



BLUE



# BOURKE

## OXFORD CHECK SHIRT

**1712L**

MEN'S  
LONG SLEEVE

Window Pane Check  
Contemporary Fit  
Placket Front  
Spread Collar  
Convertible Cuff

**SIZES** 37 - 50

**FABRIC** 60% Cotton, 40% Polyester

 COTTON RICH  EASY IRON FINISH  SILK PROTEIN FINISH



BLUE



LILAC



RED



LILAC



BOURKE





WHITE

BLUE



# OXFORD

## OXFORD SHIRTS

### 1025WL

WOMEN'S  
3/4 SLEEVE

Classic Fit  
Front Darts  
Classic Collar  
Split Cuff Detail

SIZES 8 - 22 Blue  
8 - 26 White

**FABRIC** 70% Cotton, 30% Polyester

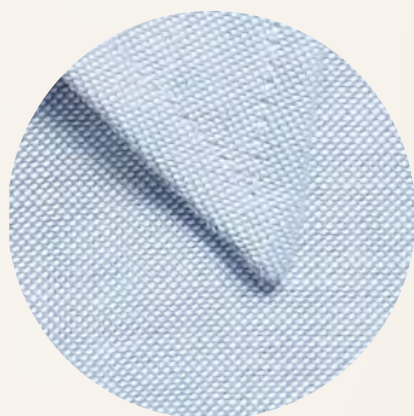
**% COTTON RICH**  **EASY IRON FINISH**

### 1015L

MEN'S  
LONG SLEEVE

Classic Fit  
Button Down Collar  
Convertible Cuff  
Left Chest Pocket

SIZES 37 - 56



BLUE



WHITE

# DEGRAVES

## OXFORD CHECK SHIRTS

### 1710L

MEN'S  
LONG SLEEVE

Contemporary Fit  
Placket Front  
Classic Collar  
Convertible Cuff

SIZES 37 - 50 Black  
37 - 56 Navy

### 1710WL

WOMEN'S  
3/4 SLEEVE

Contemporary Fit  
Front Darts  
Action Back Pleats  
Split Cuff Detail

SIZES 6 - 26

**FABRIC** 60% Cotton, 40% Polyester

 COTTON RICH



EASY IRON FINISH



SILK PROTEIN FINISH



BLACK



NAVY





NAVY



BLACK





SILVER



SILVER

# SMITH

## END ON END SHIRTS

### 1253L

MEN'S  
LONG SLEEVE

Contemporary Fit  
Classic Collar  
Convertible Cuff  
Left Chest Pocket

SIZES 37 - 54

### 1253WL

WOMEN'S  
3/4 SLEEVE

Contemporary Fit  
Front & Back Darts  
Classic Collar  
Split Cuff Detail

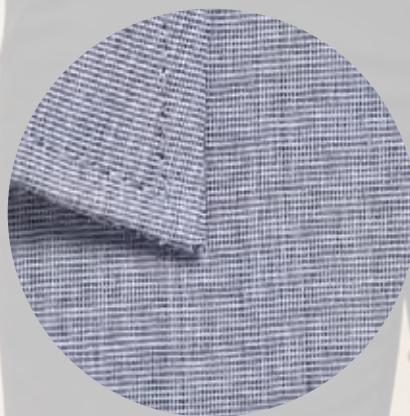
SIZES 6 - 26

**FABRIC** 65% Polyester, 35% Cotton

 POLYESTER COTTON  EASY IRON FINISH



SLATE



SILVER



# SMITH

## END ON END SHIRTS

### 1253WHS

WOMEN'S  
SHORT SLEEVE

Slim Fit

Front & Back Darts

Contrast Turnback Cuff Facing, Side  
Seam and Back Yoke Tab

Left Chest Pocket

SIZES 6 - 20

**FABRIC** 65% Polyester, 35% Cotton

 POLYESTER COTTON



EASY IRON FINISH

### 1253HS

MEN'S  
SHORT SLEEVE

Slim Fit

Classic Collar with Concealed  
Button Down

Contrast Turnback Cuff Facing,  
Side Seam and Back Yoke Tab

Left Chest Pocket

SIZES S - 3XL



SLATE



SILVER



SLATE



SMITH



BLACK



BLUE



# ICON

## 5045 CHAMBRAY SHIRTS

### 5045SN

MEN'S  
SHORT SLEEVE

- Classic #5045 Fit
- Button Down Collar
- Double Pockets
- Tortoise Shell Buttons
- Trademark Suede Pen Pocket Detail

SIZES S - 6XL

### 5045LN

MEN'S  
LONG SLEEVE

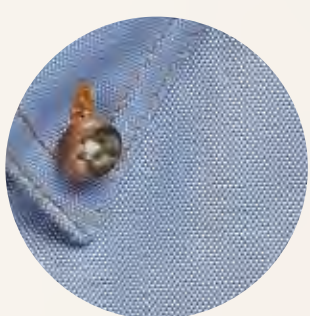
- Classic #5045 Fit
- Button Down Collar
- Double Pockets
- Tortoise Shell Buttons
- Trademark Suede Pen Pocket Detail

Adjustable Cuff

SIZES S - 6XL

**FABRIC** 100% Cotton

**% 100% COTTON**



BLUE



GREEN



SAND



BLACK



# WELLINGTON

## DENIM DOBBY SHIRTS

### 1714HL

MEN'S  
LONG SLEEVE

Slim Fit  
Concealed Button Down Collar  
Left Chest Pocket  
Roll Up Sleeve Tabs  
Adjustable Cuff

SIZES S - 3XL

### 1714WHL

WOMEN'S  
LONG SLEEVE

Slim Fit  
Classic Collar  
Left Chest Collar  
Front & Back Darts  
Roll Up Sleeve Tabs

SIZES 6 - 20

**FABRIC** 100% Cotton with Soft Garment Wash

**% 100% COTTON**



NAVY





NAVY





SLATE



# HARDWARE

## CHAMBRAY DOBBY SHIRTS

### 1713HL

MEN'S  
LONG SLEEVE

Slim Fit

Concealed Button Down Collar

Left Chest Pocket

Roll Up Sleeve Tabs

Adjustable Cuff

SIZES S - 3XL

### 1713WHL

WOMEN'S  
LONG SLEEVE

Slim Fit

Classic Collar

Left Chest Pocket

Front & Back Darts

Roll Up Sleeve Tabs

SIZES 6 - 20

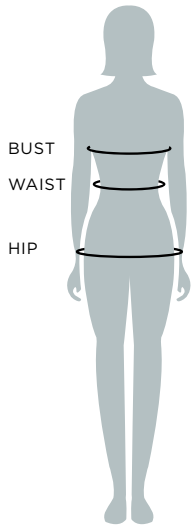
**FABRIC** 100% Cotton with Soft Garment Wash

**% 100% COTTON**



SLATE

# SIZE GUIDE



## WOMEN'S

Woven size	4	6	8	10	12	14	16	18	20	22	24	26	28	30
To fit : Bust (cm)	75	80	85	90	95	100	105	110	115	120	125	130	135	140
To fit : Waist (cm)	57	62	67	72	77	82	87	92	97	102	107	112	117	122
To fit : Hip (cm)	83	88	93	98	103	108	113	118	123	128	133	138	143	148

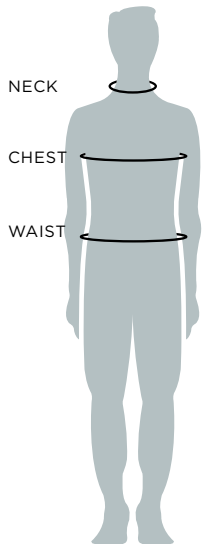
Note: Size charts are BODY measurements and to be used as a guide only. We recommend correct sizing is confirmed with a fit sample prior to bulk purchases.

### CONTEMPORARY FIT

Our most popular fit. Gently tapered through the waist giving shape without being fitted. Suits most body shapes.

### SLIM FIT

Shaped to the contours of the body. Slightly more fitted at the waist.



## MEN'S

Collar size	37	38	39	40	41	42	43	44	46	47	49	50	52	54	56	58	60
Alpha size	S		M		L		XL		2XL		3XL	4XL	5XL	6XL			
Jacket size	92		97		102		107		112	117	122	127	132	137			
To fit : Neck (cm)	37	38	39	40	41	42	43	44	46	47	49	50	52	54	56	58	60
To fit : Chest (cm)	92	96	100	104	108	112	116	120	129	134	142	146	152	158	164	170	176
Pant size	72	77	82	87	92	97	102	107	112	117	122	127	132	137			
Chino size	28	30	32	34	36	38	40	42	44								
To fit : Waist (cm)	72	77	82	87	92	97	102	107	112	117	122	127	132	137			

Note: Size charts are BODY measurements and to be used as a guide only. We recommend correct sizing is confirmed with a fit sample prior to bulk purchases.

### CONTEMPORARY FIT

Our most popular fit. Gently tapered through the waist giving shape without being fitted. Suits most body shapes.

### SLIM FIT

Tapered through the shoulders, chest and waist for a more fitted silhouette.

### 5045 CLASSIC FIT

Generous through the shoulders and waist for utmost comfort.



## ICON KEY



### **MACHINE WASHABLE**

Can be warm or cool washed in a domestic washing machine with regular washing powder or liquid without bleach.



### **EASY CARE**

Fabric has been treated with an Easy Care finish allowing it to stay fresh looking all day.



### **COTTON RICH**

The fabric is cotton and polyester blend. The predominant yarn content is cotton.



### **POLYESTER COTTON**

The fabric is a polyester and cotton blend. The predominant yarn content is polyester.



### **EASY IRON**

The garment will be easy to iron requiring only a light press to deliver a perfect finish.



### **SILK PROTEIN**

Fabric finish offers a soft silky handfeel combined with easy care laundering.



