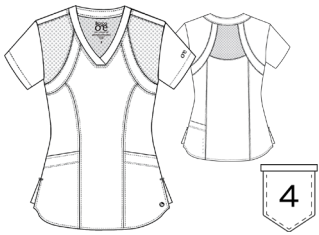


Main Fabric: 50% Polyester / 43% Recycled Polyester / 7% Spandex

5105 Racer Top

Modern Fit
4 Pockets
V-Neck
Princess Seams
Perforated Panels Front & Back
Colour Shown: 905 Steel

Sizes:
XXS - 5XL



5106 Pulse Top

Modern Fit
5 Pockets
Shaped V-Neck
Sporty Seaming
Perforated Panels Front & Back
Colour Shown: 328 Bahama

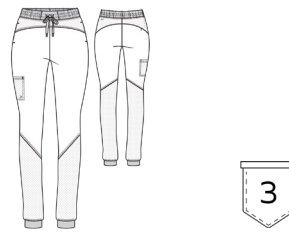
Sizes:
XXS - 5XL



BOP513 Boost Jogger

Modern Fit
3 Pockets
Mid-Rise Elastic Waist & Drawcord
Perforated Blocked Detail
Jogger Leg
Colour Shown: 01 Black

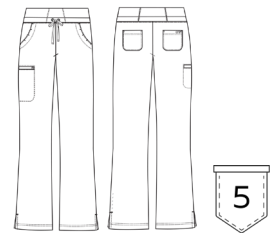
Sizes:
XXS - 5XL (Inseam 30.5")



5206 Stride Pant

Modern Fit
5 Pockets
Mid-Rise Knit Waistband
Drawcord
Shaped Leg
Colour Shown: 23 Indigo

Sizes:
XXS - 5XL (Inseam 31.5")



01 Black	01 Black	01 Black	01 Black
23 Indigo	23 Indigo	23 Indigo	23 Indigo
328 Bahama	328 Bahama	328 Bahama	328 Bahama
905 Steel	905 Steel	905 Steel	905 Steel





Recycled Fabric



4-Way Stretch



Moisture Wicking



Anti-Static

0115 Amplify Top

Modern Fit
5 Pockets
V-Neck
Raglan Sleeve Detail
Colour Shown: 905 Steel

Sizes:
XS - 5XL

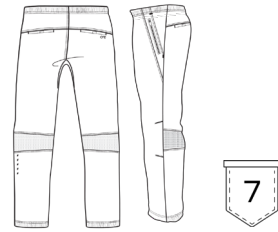
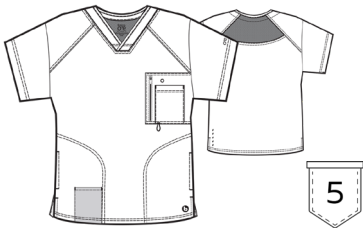
0217 Amplify Pant

Modern Fit
7 Pockets
Mid-Rise Elastic Waistband
Functional Zip Fly
Perforated Back Knee Panels
Straight Leg
Colour Shown: 328 Bahama

Sizes:
XS - 5XL (Inseam 32")



**5 Bottles
Recycled
Per Garment**



01 Black	01 Black
23 Indigo	23 Indigo
328 Bahama	328 Bahama
905 Steel	905 Steel



Main Fabric: 54% Polyester / 40% Recycled Polyester / 6% Spandex

SK101 Breeze Top

Modern Fit
3 Pockets
Virtual V-Neck
Detailed Cover Stitching
Colour Shown: 1276 New Grape

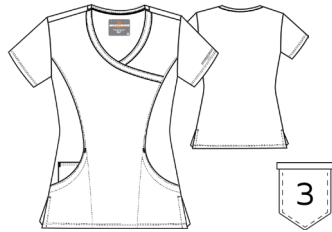
Sizes:
XXS - 5XL



SK102 Reliance Top

Modern Fit
3 Pockets
Surplice Neckline
Front Princess Seam
Colour Shown: 328 Bahama

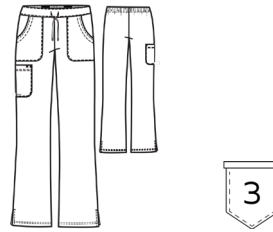
Sizes:
XXS - 5XL



SK201 Reliance Pant

Modern Fit
3 Pockets
Mid-Rise
Elastic Back Waistband
Drawcord Front
Shaped Leg
Colour Shown: 39 Teal

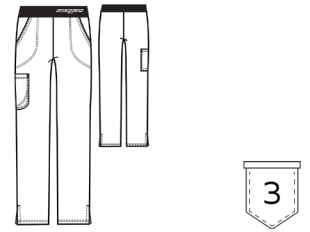
Sizes:
XXS - 5XL (Inseam 31.5")
Black, Pewter, Navy, Wine and Bahama ONLY
XXSP - XLP (Inseam 29.5")
XXST - XLT (Inseam 33.5")



SK202 Breeze Pant

Modern Fit
3 Pockets
Mid Rise
Contrast Logoed Elastic Waist
Straight Leg
Colour Shown: 1277 Eggplant

Sizes:
XXS - 5XL (Inseam 31.5")
Black, Pewter, Navy, Wine and Bahama ONLY
XXSP - XLP (Inseam 29.5")
XXST - XLT (Inseam 33.5")



01 Black	01 Black	01 Black	01 Black
08 New Royal	08 New Royal	08 New Royal	08 New Royal
18 Pewter	18 Pewter	18 Pewter	18 Pewter
37 Hunter	37 Hunter	37 Hunter	37 Hunter
39 Teal	39 Teal	39 Teal	39 Teal
40 Ciel	40 Ciel	40 Ciel	40 Ciel
41 Navy	41 Navy	41 Navy	41 Navy
65 Wine	65 Wine	65 Wine	65 Wine
328 Bahama	328 Bahama	328 Bahama	328 Bahama
503 Galaxy	503 Galaxy	503 Galaxy	503 Galaxy
1276 New Grape	1276 New Grape	1276 New Grape	1276 New Grape
1277 Eggplant	1277 Eggplant	1277 Eggplant	1277 Eggplant





Recycled Fabric



4-Way Stretch



Moisture Wicking



Easy Care

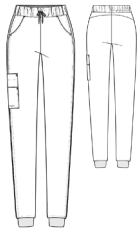


**7 Bottles
Recycled
Per Garment**

SKP552 Theory Jogger

Modern Fit
4 Pockets
Mid-Rise
Elastic Waist with Drawcord
Knit Cuffs
Jogger Leg
Colour Shown: 08 New Royal

Sizes:
XXS - 5XL
Knit Accents:
88% Polyester / 12% Spandex



01 Black

08 New Royal

SK401 Stability Jacket

Modern Fit
2 Pockets
Round Neck
Snap Front Closure
Knit Seamless Cuff
Colour Shown: 01 Black

Sizes:
XS - 5XL
Knit Accents:
100% Polyester



01 Black

41 Navy

41 Navy



Main Fabric: 54% Polyester / 40% Recycled Polyester / 6% Spandex

SK0112 Structure Top

Modern Fit
1 Pocket
Crossover V-Neck
Back Yoke
Shoulder Badge Loop
Step-Cut Side Vent Detail
Colour Shown: 08 New Royal

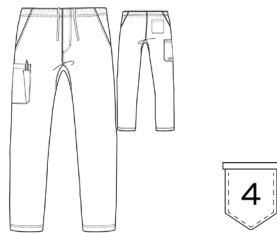
Sizes:
XS - 5XL



SK0215 Structure Pant

Modern Fit
4 Pockets
Mid-Rise
Elastic Waistband With Drawcord
Straight Leg
Colour Shown: 65 Wine

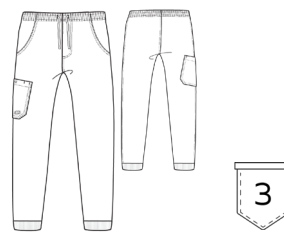
Sizes:
XXS - 5XL (Inseam 32")



SKP572 Structure Jogger

Modern Fit
3 Pockets
Mid-Rise
Front Fly
Rib Knit Cuff
Jogger Leg
Colour Shown: 01 Black

Sizes:
XS - 3XL (Inseam: 29")
Knit Accents:
94% Polyester / 6% Spandex



SK0408 Structure Jacket

Modern Fit
3 Pockets
Round Neck
Dyed-To-Match Zip Front Closure
Rib Collar & Cuffs
Colour Shown: 41 Navy

Sizes:
XS - 5XL
Knit Accents:
80% Polyester / 20% Spandex



01 Black	01 Black	01 Black	01 Black
08 New Royal	08 New Royal		
18 Pewter	18 Pewter		
41 Navy	41 Navy	41 Navy	41 Navy
65 Wine	65 Wine		
328 Bahama	328 Bahama		

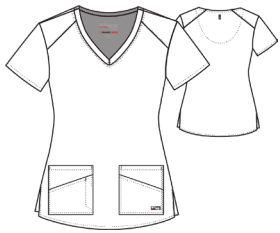


Main Fabric: 74% Polyester / 23% Rayon / 3% Spandex Twill

GRST011 Emma Top

Modern Fit
 4 Pockets
 V-Neck
 Shaped Hem
 Colour Shown: 65 Wine

Sizes:
 XXS - 5XL



GRST045 Serena Top

Modern Fit
 3 Pockets
 Ribbed V-Neck
 Ribbed Back Inserts
 Side Slit Details
 Colour Shown: 23 Indigo

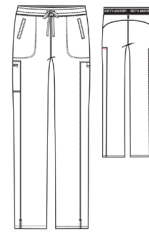
Sizes:
 XXS - 3XL
 Knit Accents:
 94% Polyester / 6% Spandex



GRSP500 Kim Pant

Modern Fit
 3 Pockets
 Mid-Rise Logoed Elastic Back
 Tie Front
 Straight Leg
 Colour Shown:

Sizes:
 XXS - 5XL (Inseam 31")



GRSP527 Carly Jogger

Modern Fit
 7 Pockets
 Mid-Rise Rib Trim Waistband
 Rib Knit Cuff
 Jogger Leg
 Colour Shown:

Sizes:
 XXS - 3XL (Inseam 29")
 Knit Accents:
 94% Polyester / 6% Spandex



01 Black	01 Black	01 Black	01 Black
23 Indigo	23 Indigo	23 Indigo	23 Indigo
65 Wine	65 Wine	65 Wine	65 Wine

ANTIMICROBIAL

ANTIMICROBIAL





Spandex Stretch



Soil Release



Moisture Wicking



Extreme Comfort

GRST079 Murphy Top

Modern Fit
2 Pockets
V-Neck
Back Yoke
Shoulder Badge Loop
Colour Shown: 65 Wine

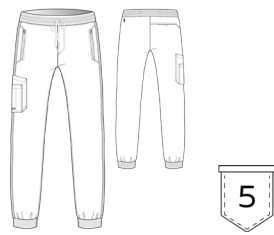
Sizes:
XS - 5XL



GRSP550 Murphy Jogger

Modern Fit
5 Pockets
Mid-Rise Rib Knit Waist
Zipper Fly
Jogger Leg
Colour Shown: 23 Indigo

Sizes:
XS - 5XL (Inseam 29")
Knit Accents:
94% Polyester / 6% Spandex



01 Black	01 Black
23 Indigo	23 Indigo
65 Wine	65 Wine

ANTIMICROBIAL

ANTIMICROBIAL

ANTIMICROBIAL FABRIC PROPERTIES



- Reduce mold and mildew
- Decrease odors
- Keep you fresh for hours



Grey's Anatomy™ Evolve will be available to purchase from September 2023

Main Fabric: 48% CiCLO Polyester / 44% Recycled Polyester / 8% Spandex

GSST180 Rhythm Top

Modern Fit
 2 Pockets
 V-Neck with Piped Edge
 Back Princess Seams
 Colour Shown: 08 New Royal

Sizes:
 XXS - 5XL



GSST181 Sway Top

Modern Fit
 1 Pocket
 Banded V-Neck
 Shoulder Badge Loop
 High-Low Step Front Hem
 Colour Shown: 905 Steel

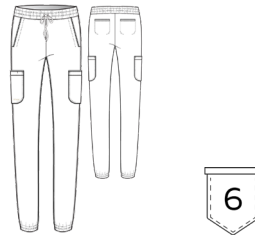
Sizes:
 XXS - 5XL



GSSP625 Terra Jogger

Modern Fit
 6 Pockets
 Mid Rise Elastic Waistband
 Elastic Cuff
 Jogger Leg
 Colour Shown: 23 Indigo

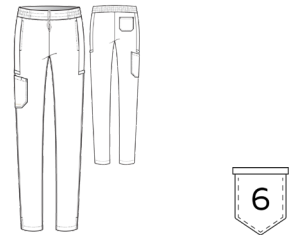
Sizes:
 XXS - 5XL (Inseam 29")



GSSP627 Cosmo Pant

Modern Fit
 6 Pockets
 Mid Rise Elastic Waistband
 Side Panels
 Tapered Leg
 Colour Shown: 01 Black

Sizes:
 XXS - 5XL (Inseam 30")



01 Black	01 Black	01 Black	01 Black
08 New Royal	08 New Royal	08 New Royal	08 New Royal
23 Indigo	23 Indigo	23 Indigo	23 Indigo
905 Steel	905 Steel	905 Steel	905 Steel





Eco Friendly



Spandex Stretch



Moisture Wicking

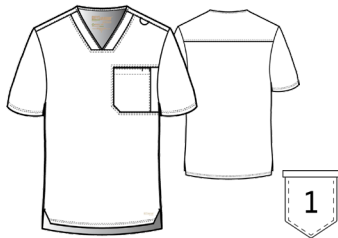


Wrinkle Recovery

GSST179 Journey Top

Modern Fit
1 Pocket
V-Neck with Piped Edge
Shoulder Badge Loop
Colour Shown: 08 New Royal

Sizes:
XS - 5XL



GSSP626 Voyager Jogger

Modern Fit
5 Pockets
Mid Rise Elastic Waist
Elastic Cuff
Jogger Leg
Colour Shown: 905 Steel

Sizes:
XS - 5XL (Inseam 29")



01 Black	01 Black
08 New Royal	08 New Royal
23 Indigo	23 Indigo
905 Steel	905 Steel

CiCLO®

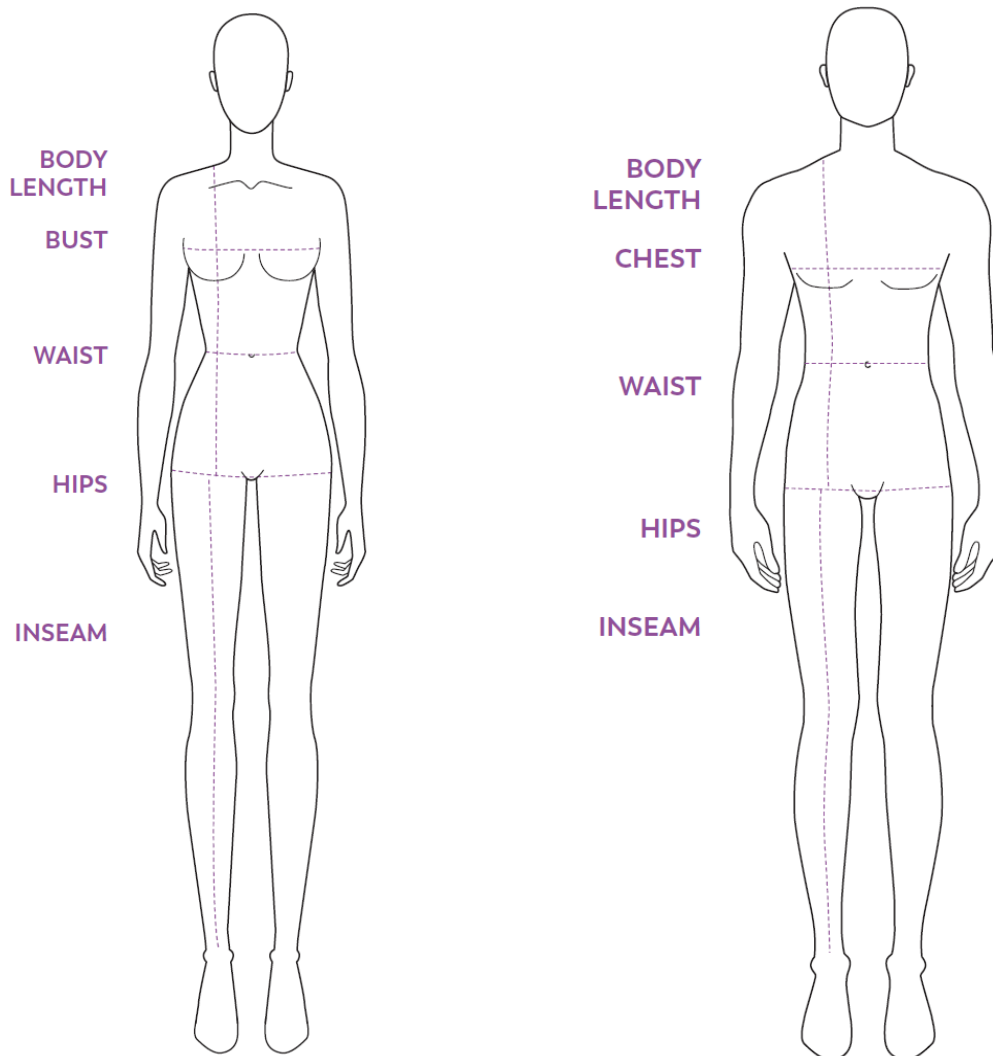
FUNCTIONAL SENSIBLE SUSTAINABLE

At a glance

CiCLO® technology is a sustainable textiles ingredient in the form of an additive that is combined with polyester and nylon during melt extrusion at the very beginning of the fiber-making process. CiCLO® additive creates countless biodegradable spots in the matrix of the plastic, where microbes that naturally exist in certain environments can break down the materials just like they do with natural fibers.



How to get the perfect fit



Bust / Chest

Measure under the arms and across the fullest area of bust/chest.

Waist

Measure around the smallest part of your waist

Hip

Measure around the fullest part of your hips

Inseam

Measure from the top of your inner thigh to the ankle bone

Size Guides



Ladies US Size Guide (inches)

Skechers™ by Barco, Barco® One, Grey's Anatomy™ Stretch, Grey's Anatomy™ Evolve

Size	00	0 - 2	4 - 6	8 - 10	12 - 14	16 - 18	20 - 22	24 - 26	28 - 30	32 - 34
	XXS	XS	S	M	L	XL	2XL	3XL	4XL	5XL
Bust	31 - 32	33 - 34	35 - 36	37 - 39	40 - 42	43 - 45	46 - 48	50 - 52	54 - 56	58 - 60
Waist	23.5 - 24.5	25.5 - 26.5	27.5 - 28.5	29.5 - 31.5	32.5 - 34.5	35.5 - 37.5	39 - 41	43 - 45	47 - 49	51 - 53
Hip	34 - 35	36 - 37	38 - 39	40 - 42	43 - 45	46 - 48	49 - 51	53 - 55	57 - 59	61 - 63

Ladies AU Converted Size Guide (cm)

Skechers™ by Barco, Barco® One, Grey's Anatomy™ Stretch, Grey's Anatomy™ Evolve

Size	4	6 - 8	8 - 10	10 - 12	12 - 14	14 - 16	16 - 18	18 - 20	20 - 22	22 - 24
	XXS	XS	S	M	L	XL	2XL	3XL	4XL	5XL
Bust	79 - 81	84 - 86	89 - 91	94 - 99	102 - 107	109 - 114	117 - 122	127 - 132	137 - 142	147 - 152
Waist	60 - 62	65 - 67	70 - 72	75 - 80	83 - 88	90 - 95	99 - 104	109 - 114	119 - 124	130 - 135
Hip	86 - 89	91 - 94	97 - 99	102 - 107	109 - 114	117 - 122	124 - 130	135 - 140	145 - 150	155 - 160

Men's US Size Guide (inches)

Skechers™ by Barco, Barco® One, Grey's Anatomy™ Stretch, Grey's Anatomy™ Evolve

Size	29 - 31	32 - 34	35 - 37	38 - 40	42 - 44	46 - 48	50 - 52	54 - 56	58 - 60	62
	XXS	XS	S	M	L	XL	2XL	3XL	4XL	5XL
Chest	30 - 32	33 - 35	36 - 38	39 - 41	43 - 45	47 - 49	51 - 53	55 - 57	59 - 61	63 - 65
Waist	23.5 - 25.5	26.5 - 28.5	29.5 - 31.5	32.5 - 34.5	36.5 - 38.5	40.5 - 42.5	44.5 - 46.5	48.5 - 50.5	52.5 - 54.5	56.5 - 58.5
Hip	30.5 - 31.5	33.5 - 34.5	36.5 - 37.5	38.5 - 40.5	42.5 - 44.5	46.5 - 48.5	49 - 51	53 - 55	57 - 59	61 - 63

Men's AU Converted Size Guide (cm)

Skechers™ by Barco, Barco® One, Grey's Anatomy™ Stretch, Grey's Anatomy™ Evolve

Size	74 - 79	82 - 86	89 - 94	96 - 102	107 - 112	117 - 122	127 - 132	137 - 142	147 - 152	152
	XXS	XS	S	M	L	XL	2XL	3XL	4XL	5XL
Chest	76 - 81	84 - 89	91 - 97	99 - 104	109 - 114	119 - 124	130 - 135	140 - 145	150 - 155	160 - 165
Waist	60 - 65	67 - 72	75 - 80	83 - 88	93 - 98	103 - 108	113 - 118	123 - 128	133 - 138	144 - 149
Hip	77 - 80	85 - 88	93 - 95	98 - 103	108 - 113	118 - 123	124 - 130	135 - 140	145 - 150	155 - 160

Barco Uniforms' is incorporating Pro-Tek™ finishing on products*¹ from 2022.

How the Technology Works

Pro-Tek™ is a zinc ion based protective finish. Zinc is an antimicrobial agent that has been used for centuries by humans.

The zinc ions adhere to fabric surfaces and disrupt the growth of bacteria. When undesirable bacteria come into contact with the Pro-Tek™ finish, the growth of the bacteria is disrupted and reduced.

Zinc: The broad-spectrum antimicrobial

Zinc-based additives are broad-spectrum antimicrobials. This means they are effective in adding another level of antimicrobial defense not only against bacteria, but also in the fight against mold, mildew and algae.

Zinc is a bio-safe mineral, non-toxic to human cells, but toxic to bacteria. Zinc's distinct antimicrobial properties interrupt the bacterial food chain and inhibit the cell division of microorganisms.

Barco® has incorporated The Rudolf Group's RUCO®-BAC ZPY*² technology into Pro-Tek™ treated fabrics.

Benefits of Pro-Tek™

Healthcare professionals are exposed to bacteria on a daily basis. Pro-Tek™ promotes the following:

- Fungicidal and bactericidal properties for protective textile finishes
- Protection against unpleasant odor build-up
- Freshness for hours

*¹ Only selected products within the Grey's Anatomy brands have been treated with the Pro-Tek™ finish. Antimicrobial symbols can be found on all applicable products.

*² RUCO®-BAC ZPY is an antimicrobial protective finish for all fiber types, especially suitable for intimate-contact textiles

- fungicidal and bactericidal properties for protective textile finishes
- interrupts the food-chain of microorganisms
- wash-resistant
- registered on the Oeko-Tex list
- bluesign®-approved
- EPA-registration (*EPA = Environmental Protection Agency, USA)





FUNCTIONAL SENSIBLE SUSTAINABLE

At a glance

CiCLO® technology is a sustainable textiles ingredient in the form of an additive that is combined with polyester and nylon during melt extrusion at the very beginning of the fiber-making process. CiCLO® additive creates countless biodegradable spots in the matrix of the plastic, where microbes that naturally exist in certain environments can break down the materials just like they do with natural fibers.

For quality assurance and traceability, we only sell CiCLO® additive to our global network of certified fiber and yarn manufacturers. Brands and retailers may purchase CiCLO® fiber and yarn directly from our network of CiCLO® Certified Manufacturers for endless applications, from apparel to rugs and more.

Safe

The chemistry used to make CiCLO® fibers is ECO PASSPORT by OEKO-TEX® certified. This independent certification offers transparent proof that CiCLO® ingredients meet the criteria for ecologically responsible textile manufacturing.

During a multi-step process, each individual ingredient is analyzed to confirm it meets statutory requirements and is not harmful to human health. Certification requirements are updated annually to include new scientific findings or statutory requirements.

CiCLO® additive and the process of bio-degradation have also been proven non-toxic to marine life.

Effective

Reliable scientific data from third-party laboratory studies have proven CiCLO® fibers, yarns and textiles effective over the course of several years. Lab studies determine the rate and extent of bio-degradation in simulated environments, including wastewater treatment plant sludge, seawater, soil and landfills. Long-term data demonstrates clearly how CiCLO® textiles and fugitive microfibers are metabolized by microbes while untreated textiles remain persistent and refractory (resistant to bio-degradation) in those same environments.

Studies are conducted using internationally recognized respirometry test methods established by The American Society for Testing and Materials (ASTM) to measure true bio-degradation of plastics in various environments.

Benefits

- Non-toxic to marine life
- Easy to implement in existing manufacturing
- Maintains integrity of fibers, no loss of durability or performance
- Only activated in conditions where bio-degradation can occur
- Fibers and yarns are traceable



For further information on CiCLO technology, please see <https://ciclotextiles.com/>