



CORE BASICS GUIDE



Your brand. Our canvas.



Your New Favourites.

An all-star lineup of our essential styles.

- M** Modern Fit
- S** Slim Fit
- E** Easy Fit



#Ice

2



#Streetworx

4



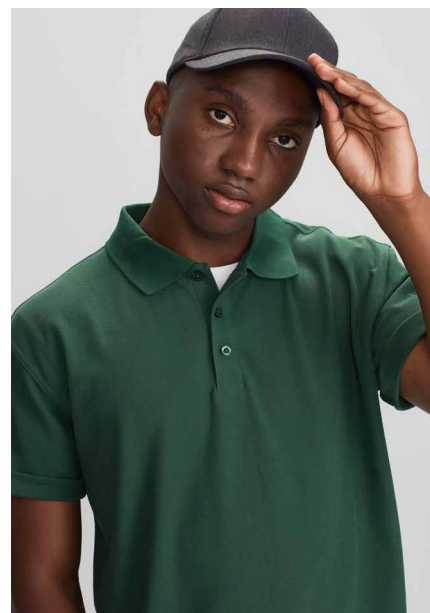
#Streetworx Sleeveless

6



#Aero

8



#Crew

10



#Heritage

12

T10012	MENS TEE	S - 3XL, 5XL
T10022	WOMENS TEE	6 - 24
T10032	KIDS TEE	2 - 16

Solid: 100% Combed Cotton

Fluoro: 65% Polyester, 35% Cotton

Marle: 85% Cotton, 15% Viscose

185 GSM

Twin needle sleeve and body hem. Ribbed elastane neck band. Tear-away label to facilitate re-branding. Side seams. Taped shoulder to maintain shape.

 Black	 Forest
 Charcoal	 Khaki
 Grey Marle	 Mocha
 Snow Marle	 Purple
 White	 Gold
 Navy	 Orange
 Royal	 Red
 Denim	 Fuchsia
 Spring Blue	 Pink (W & K Only)
 Neon Cyan	 Fluoro Orange
 Neon Green	 Fluoro Yellow Lime
 Kelly Green	





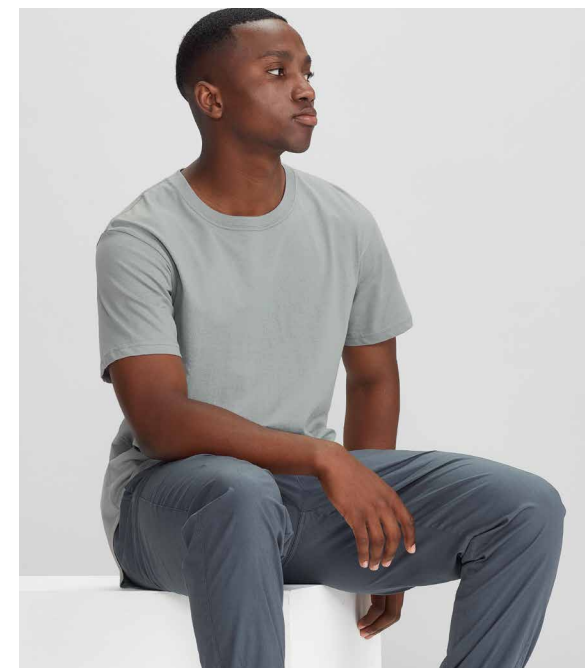
Streetworx S

ZH135 MENS TEE XS - 5XL
ZH735 WOMENS TEE XS - 2XL

100% Super Compact Cotton
Charcoal Marle: 60% Cotton 40% Polyester
160 GSM
28 Singles

Soft, lightweight and breathable. Longer tail with curved hem. Tear-away label to facilitate re-branding. Side seams. Taped shoulder to maintain shape.

- Black Charcoal Marle
- White Navy
- Petrol Blue Light Sage
- Slate Light Khaki





Streetworx

ZH137 MENS SLEEVELESS XS - 5XL

100% Super Compact Cotton
Charcoal Marle: 60% Cotton 40% Polyester
160 GSM
28 Singles

Soft, lightweight and breathable. Drop armhole with raw edge finish. Longer tail with curved hem. Tear-away label to facilitate re-branding. Side seams. Taped shoulder to maintain shape.



Black



Charcoal Marle



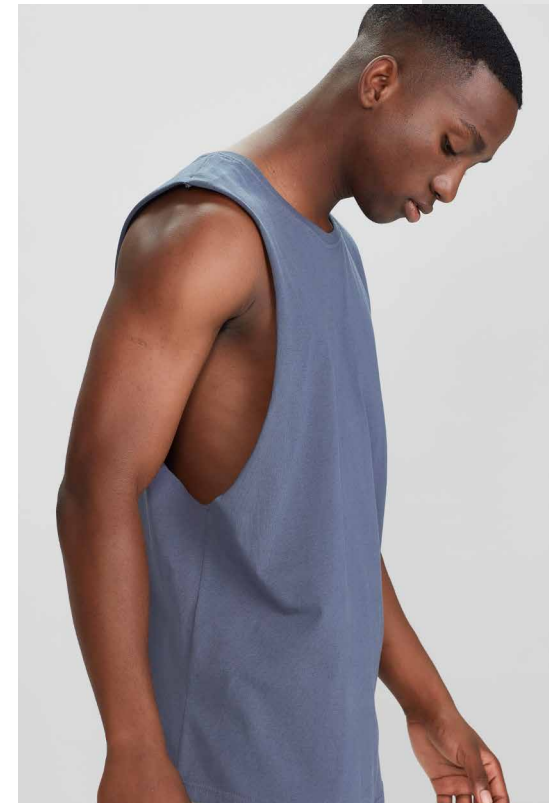
White

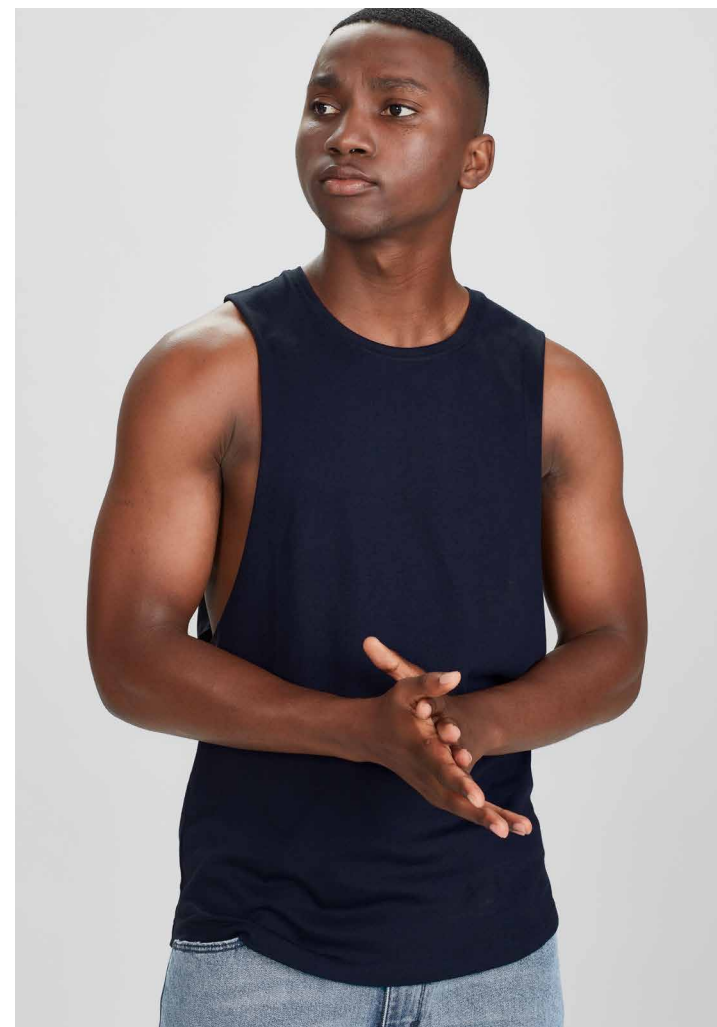


Navy



Petrol Blue





Aero M

T800MS MENS TEE XS - 3XL, 5XL
T800LS WOMENS TEE 6 - 24

BIZ COOL™ 100% Micro Polyester
 160 GSM

Anti-shrink, anti-fade. Cotton-like feel that keeps you cool and dry. Heathered marle look. Mens style classic crew neck. Womens style V-neck.

P815MS MENS POLO XS - 3XL, 5XL
P815LS WOMENS POLO 6 - 24

BIZ COOL™ 100% Micro Polyester
 160 GSM

Anti-shrink, anti-fade. Cotton-like feel that keeps you cool and dry. Heathered marle look. Flat-locked shoulder seams. Self-fabric collar and placket.

- | | |
|---|--|
|  Black (Solid) |  Electric Blue |
|  Black |  Cyan |
|  Charcoal |  Teal |
|  Silver |  Lime |
|  White |  Red |
|  Navy |  Magenta (W Only) |





P400MS	MENS POLO	S - 3XL, 5XL
P400LS	WOMENS POLO	8 - 24
P400KS	KIDS POLO	4 - 16

65% Polyester, 35% Cotton Pique
210 GSM

Top-stitched armhole. Twin needle sleeve and body hem. Knitted flat collar. Dyed-to-match pearlised placket buttons.

- | | |
|--|---|
|  Black |  Forest (M & K Only) |
|  Charcoal |  Kelly Green |
|  Grey Marle (M & K Only) |  Purple |
|  White |  Fuchsia |
|  Navy |  Maroon (M & K Only) |
|  Royal |  Gold (M & K Only) |
|  Cyan |  Orange |
|  Spring Blue (M & K Only) |  Red |
|  Teal | |





P400ML MENS LS POLO S - 3XL, 5XL
P400LL WOMENS LS POLO 8 - 24

65% Polyester, 35% Cotton Pique
210 GSM

Top-stitched armhole. Twin needle sleeve and body hem. Knitted flat collar. Dyed-to-match pearlised placket buttons.

-  Black
-  Charcoal
-  Navy



Heritage S

ZT830 MENS PULLOVER XXS - 5XL, 7XL

60% Cotton, 40% Viscose
185 GSM

Soft, lightweight textured fabric. Rolled hems, pocket, and neck. Light wash for increased comfort. Chest pocket. Slightly longer back hem.



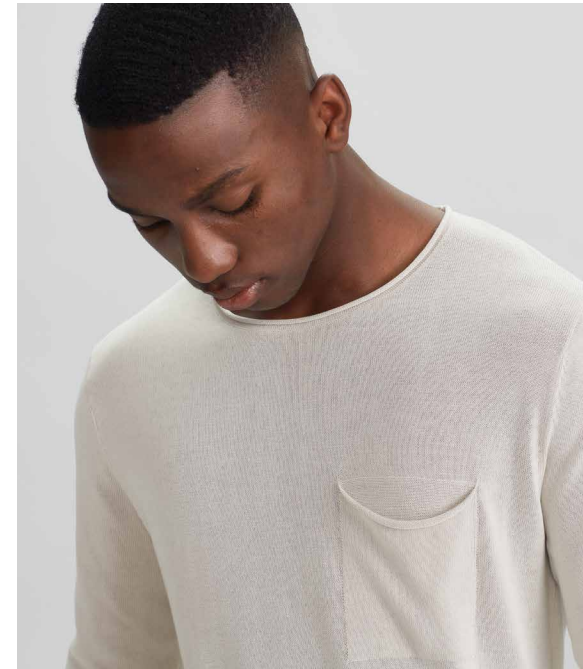
Black



Navy



Stone







#Crew



16 #Hype



Layers On Layers.

A spotlight on cool pieces for cooler temperatures.

- M** Modern Fit
- S** Slim Fit
- E** Easy Fit

Crew E

SW760M MENS HOODIE XS - 3XL, 5XL
 SW760L WOMENS HOODIE XS - 2XL
 SW760K KIDS HOODIE 4 - 14

55% Cotton, 45% Polyester
 320 GSM

Traditional front kangaroo pocket. Knitted ribbed band on hem and cuff. Adults style features hood with wider 'shoelace' drawstring. No drawstring on Kids.



SW762M MENS ZIP HOODIE XS - 3XL, 5XL
 SW762L WOMENS ZIP HOODIE XS - 2XL
 SW762K KIDS ZIP HOODIE 4 - 14

55% Cotton, 45% Polyester
 320 GSM

Traditional front kangaroo pocket. Knitted ribbed band on hem and cuff. Adults style features hood with wider 'shoelace' drawstring. No drawstring on Kids.








Hype E

SW239ML MENS CLASSIC HOODIE S - 3XL, 5XL
SW239KL KIDS CLASSIC HOODIE 4 - 16

100% Polyester Performance Fleece
 245 GSM






Traditional front kangaroo pocket. Matching loose-fit hem ribbing. Excellent fade and shrink resistance. Adults style features hood with wider 'shoelace' drawstring. No drawstring on Kids.

-  Black
-  Grey Marle
-  Navy

SW025M MENS TWO TONE HOODIE S - 3XL, 5XL
SW025K KIDS TWO TONE HOODIE 4 - 16

100% Polyester Performance Fleece
 245 GSM

Raglan contrast sleeves. Traditional front kangaroo pocket. Matching loose-fit hem ribbing. Excellent fade and shrink resistance. Adults style features hood with wider 'flat' drawstring. No drawstring on Kids.

-  Black
Grey Marle
-  Grey Marle
Black
-  Grey Marle
Navy
-  Grey Marle
Royal
-  Grey Marle
Red





Multi-Pocket **E**

ZT467 UNISEX HOODIE **XXS - 5XL, 7XL**

55% Cotton, 45% Polyester
320 GSM

Soft warm fleece lining. Mesh hood lining. Traditional front kangaroo pocket. Ribbed knit on hem and cuffs. Woven arm pen pocket in contrast fabric. Two side hip pockets with closure. Reinforced at all key stress points with bar tacks.

Black
Charcoal

Navy
Charcoal

Grey Marle
Charcoal

Charcoal
Black

ZT366 UNISEX FLEECE **XXS - 5XL, 7XL**

55% Cotton, 45% Polyester
320 GSM

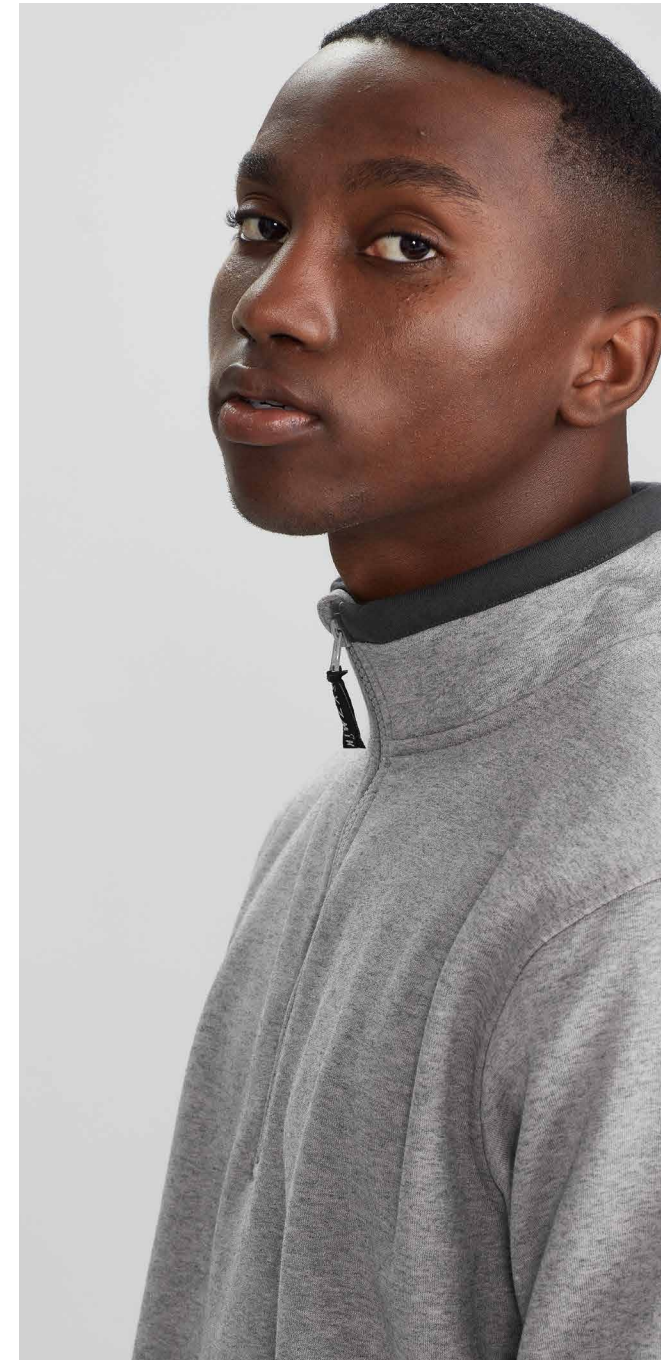
Premium heavy weight brushed fleece. Half zip. Ribbed knit on hem and cuffs. Woven arm pen pocket in contrast fabric. Two side hip pockets. Reinforced at all key stress points with bar tacks.

Black
Charcoal

Navy
Charcoal

Grey Marle
Charcoal

Charcoal
Black





**WANT
TO SEE
MORE?**